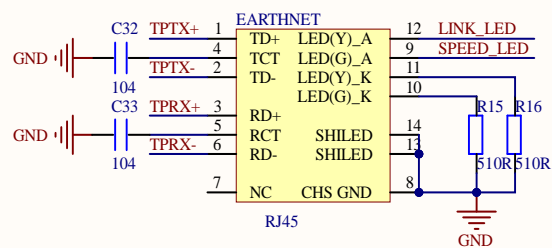
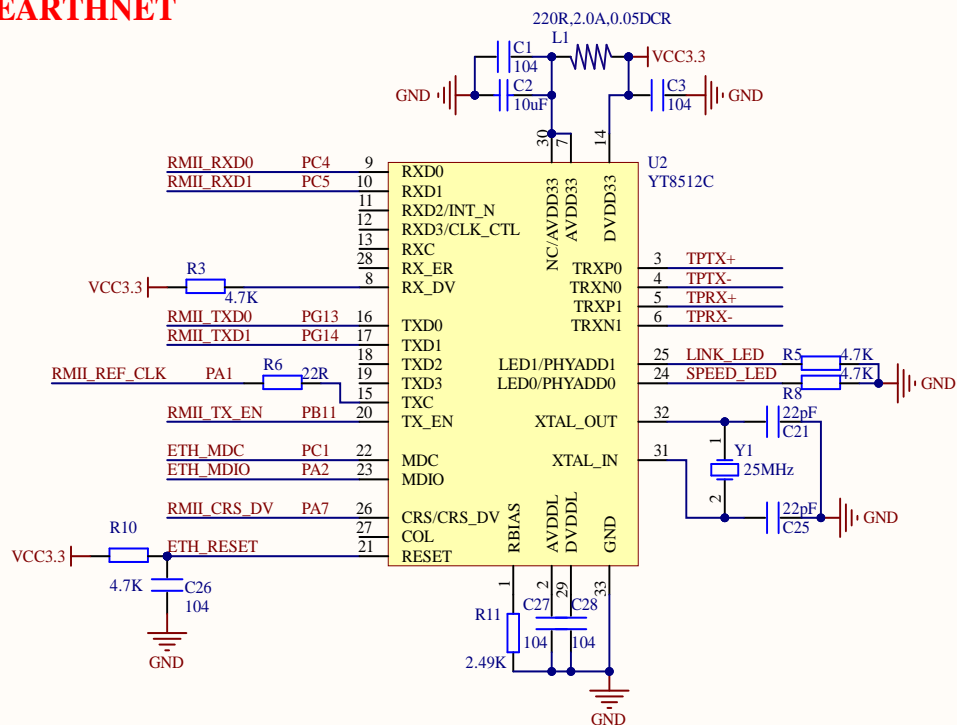
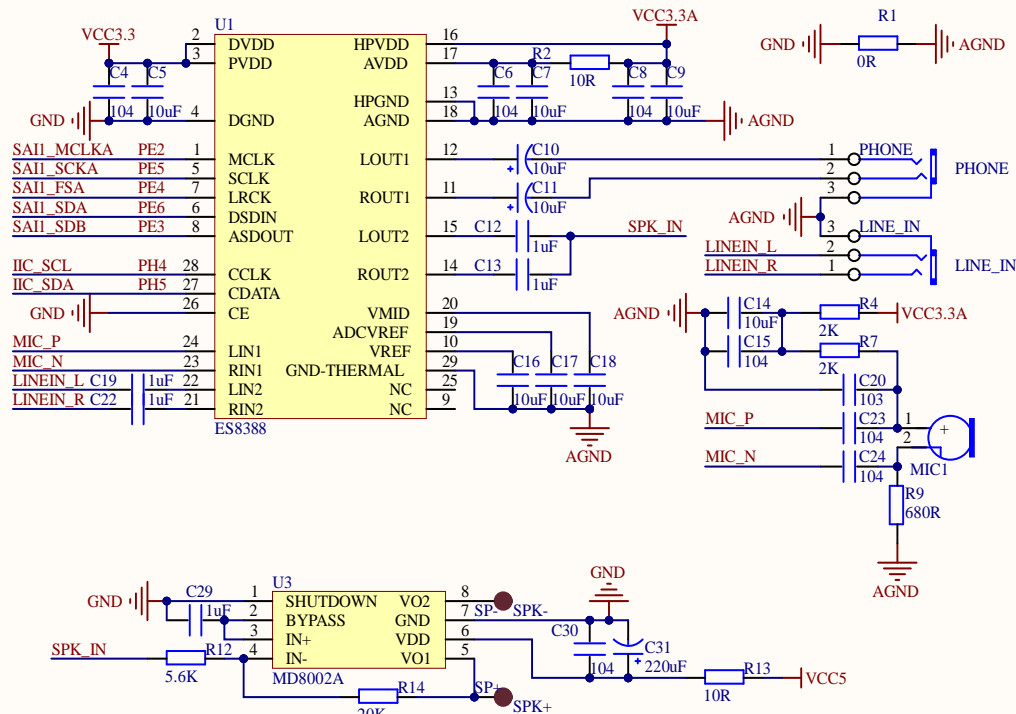


EARTHNET

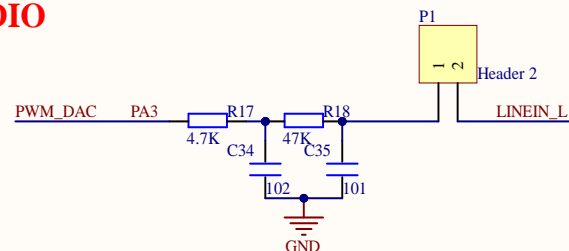


I2S DAC&ADC



SPK+ 和 SPK- 连接开发板自带的喇叭，在开发板底部。

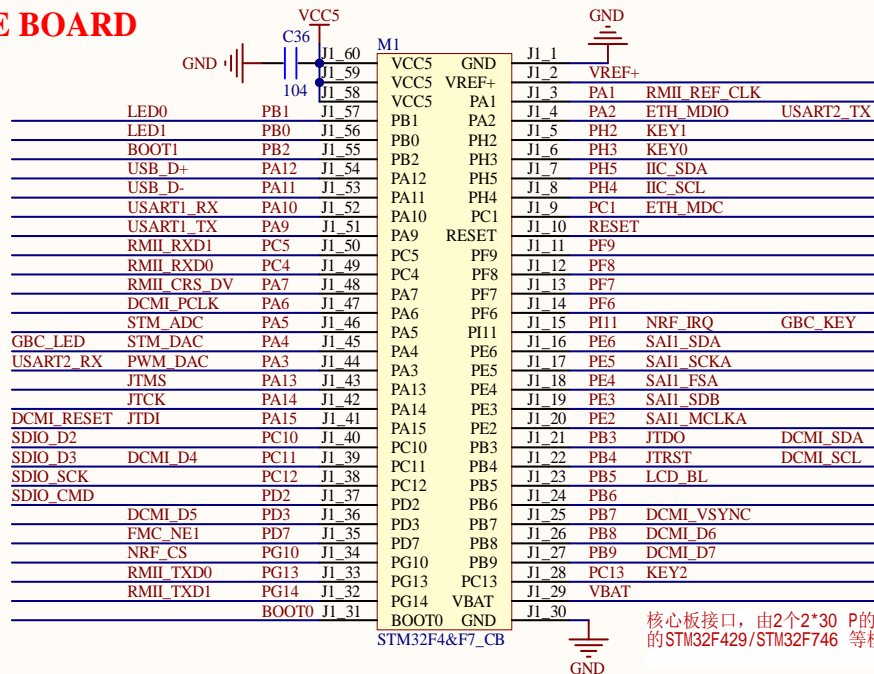
PWM DAC/AUDIO



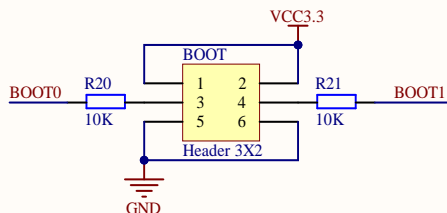
Title:	
APOLLO_AUDIOÐNET	
Author:	Size:
ALIENTEK	A4
Date:	File:
2024/7/25	AUDIOÐNET.SchDoc
Revision:	Version:
V2.5	V2.5



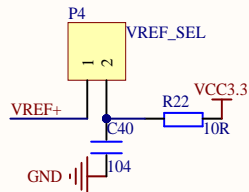
CORE BOARD



BOOT

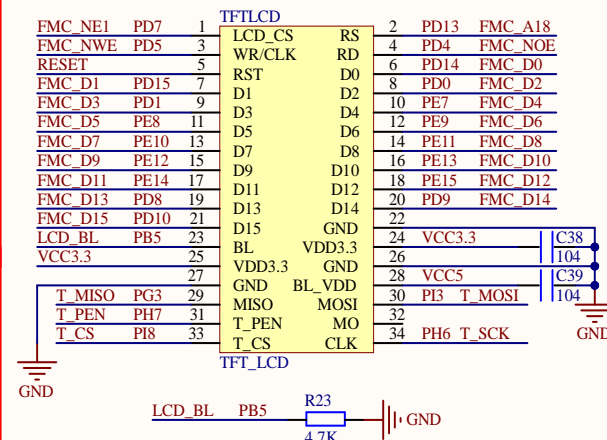


VREF



MCU参考电压选择端口，同时可以控制核心板上LED的亮灭，如果P4短接，则核心板上的电源灯(PWR)和DS0都不会亮。如果需要核心板上的LED亮，拔掉P4的跳线帽即可。

LCD(MCU)



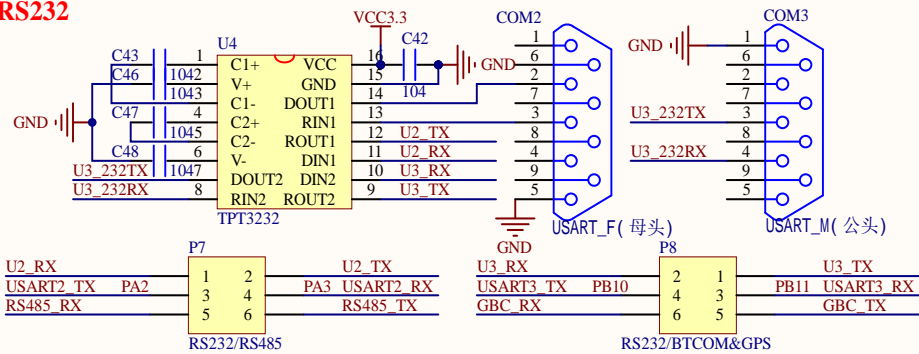
Title:
APOLLO CORE
Author:
ALIENTEK
Date:
2024/7/25
Revision:
V2.5

Size:
A4
File:
CORE.SchDoc
Version:
V2.5

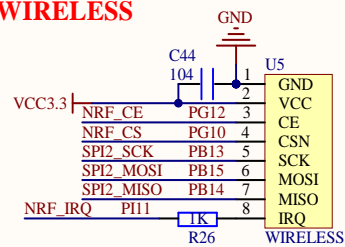


正点原子

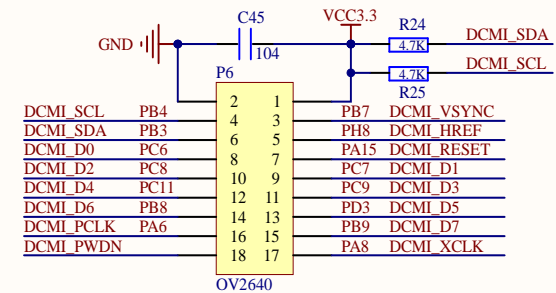
RS232



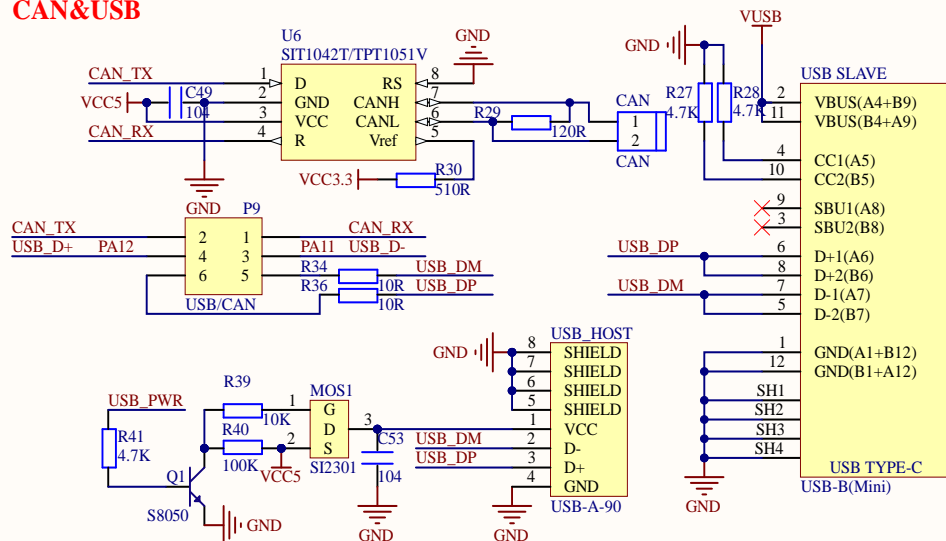
WIRELESS



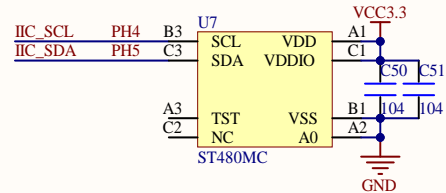
OLED&CAMERA



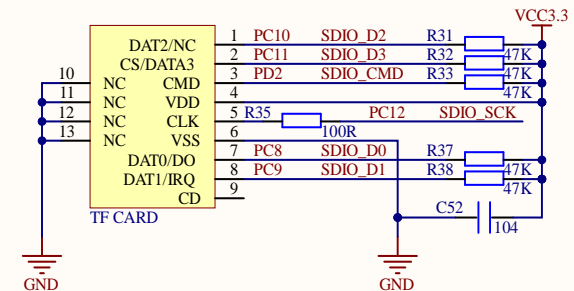
CAN&USB



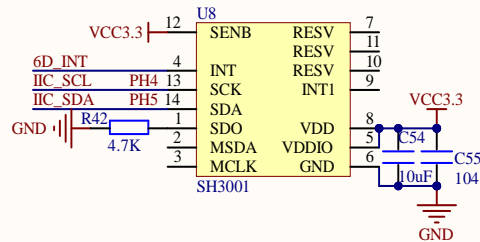
3 AXIS MAGNETOMETER



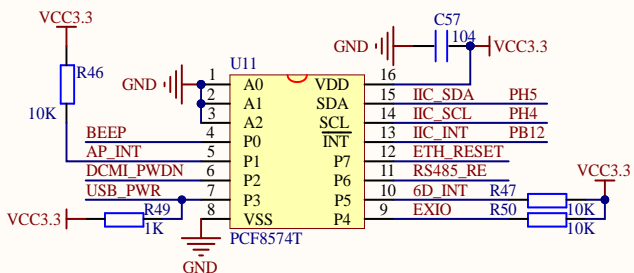
SD CARD



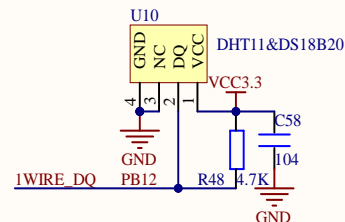
6 AXIS SENSOR



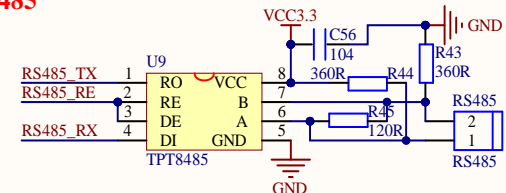
IO_EXPANDER



TEMP&HUMI SENSOR



RS485

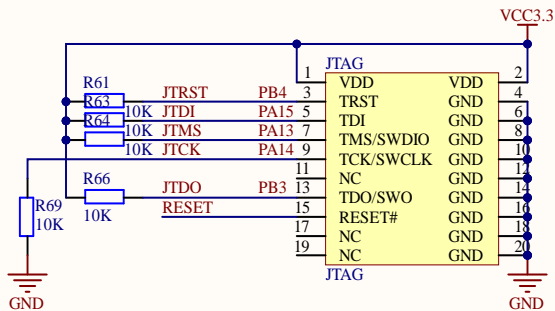


Title:
APOLLO_DEVICE
Author:
ALIENTEK
Date:
2024/7/25
Revision:
V2.5

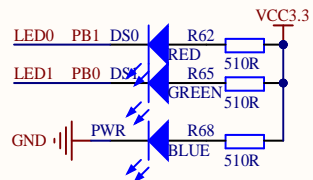
Size:
A4
File:
DEVICE.SchDoc
Version:
V2.5



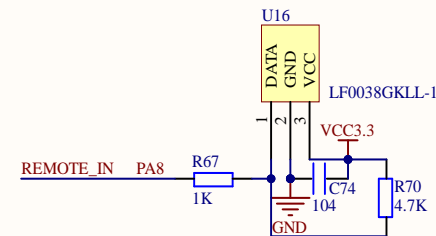
JTAG



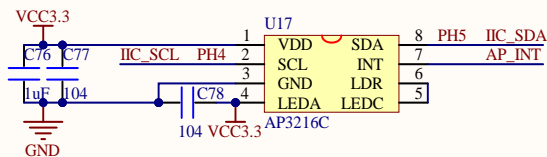
LED



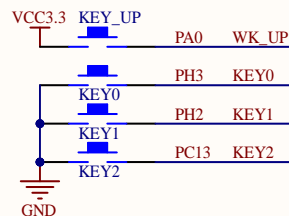
REMOTE



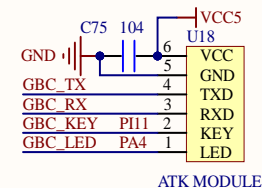
ALS&PS SENSOR



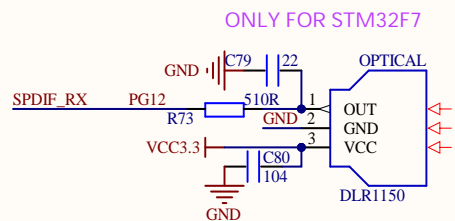
KEY



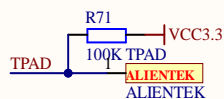
ATK MODULE



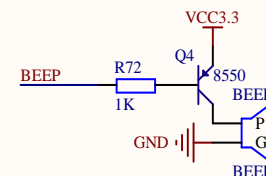
OPTICAL IN



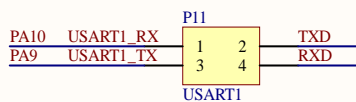
TOUCH_KEY



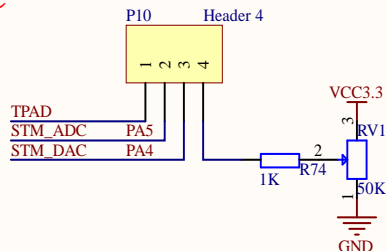
BEEP



USB_UART/USART1



ADC&DAC



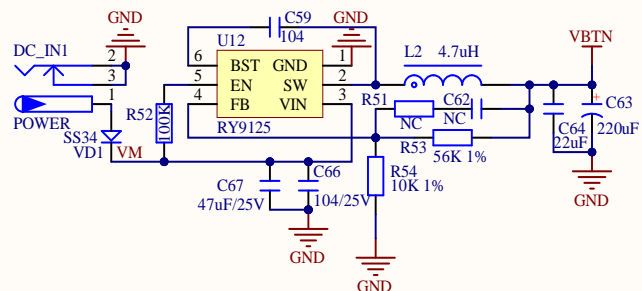
Title:
APOLLO DEVICE2
Author:
ALIENTEK
Date:
2024/7/25
Revision:
V2.5

Size:
A4
File:
DEVICE2.SchDoc
Version:
V2.5

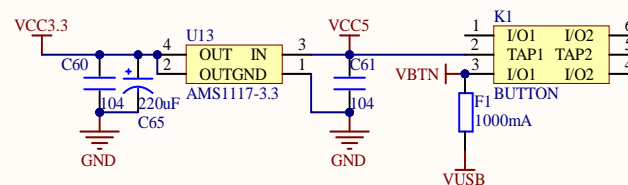


正点原子

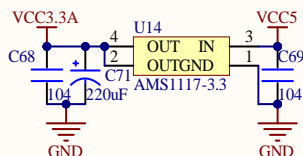
DC POWER IN



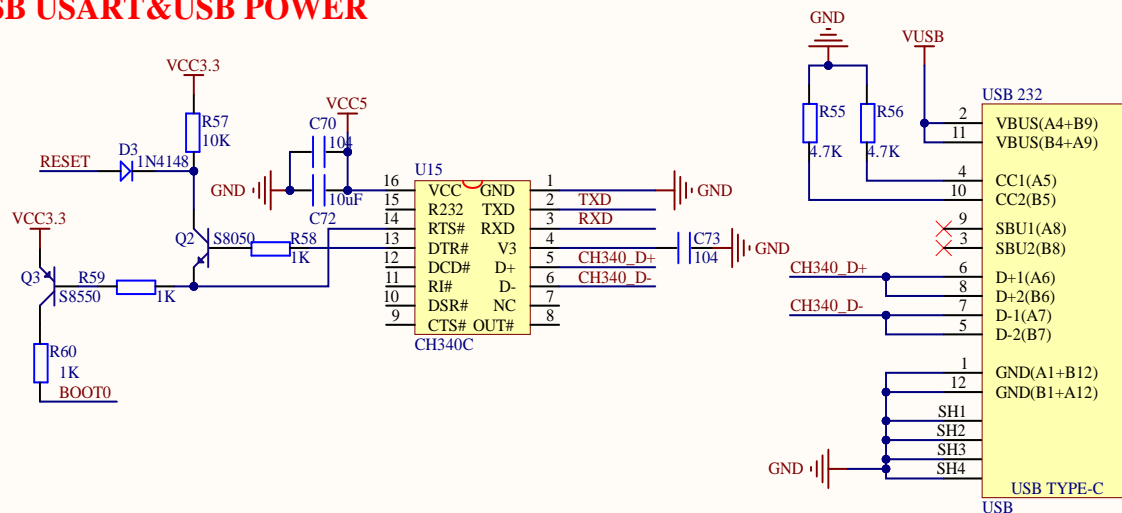
3.3V & POWER SWITCH



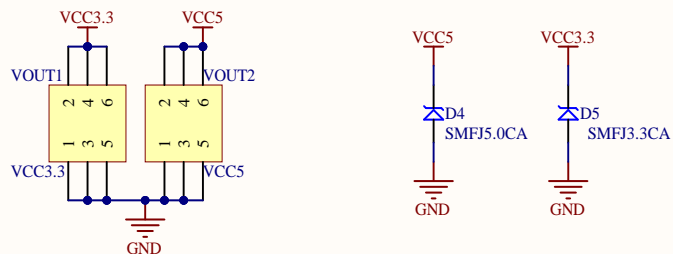
ANALOG POWER



USB USART&USB POWER



ON BOARD POWER SOURCE

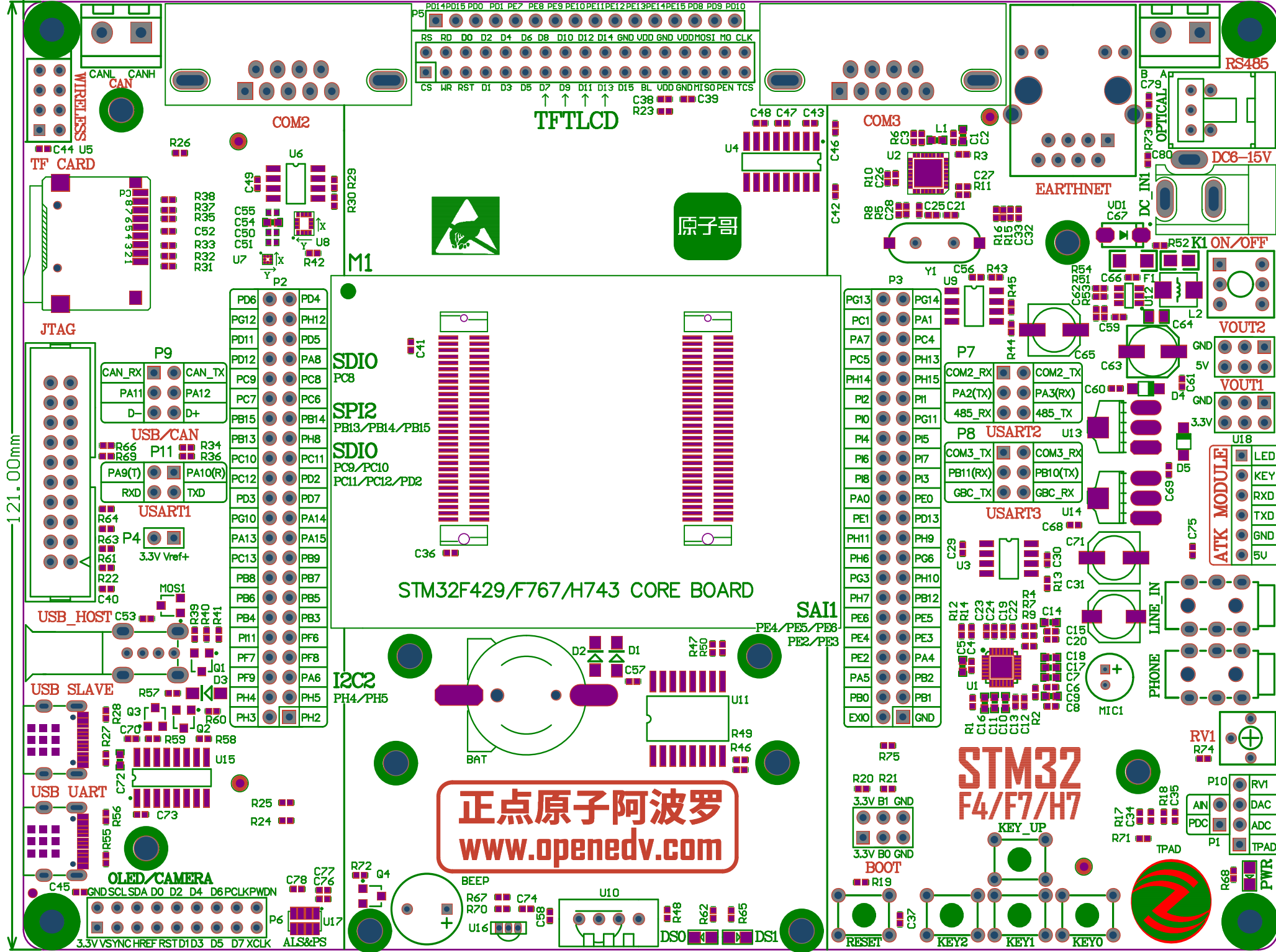


Title: APOLLO POWER&USB USART	
Author: ALIENTEK	Size: A4
Date: 2024/7/25	File: POWER&USB_USART.SchDoc
Revision: V2.5	Version: V2.5



160.00mm

121.00mm



正点原子阿波罗
www.openedv.com

STM32
F4/F7/H7